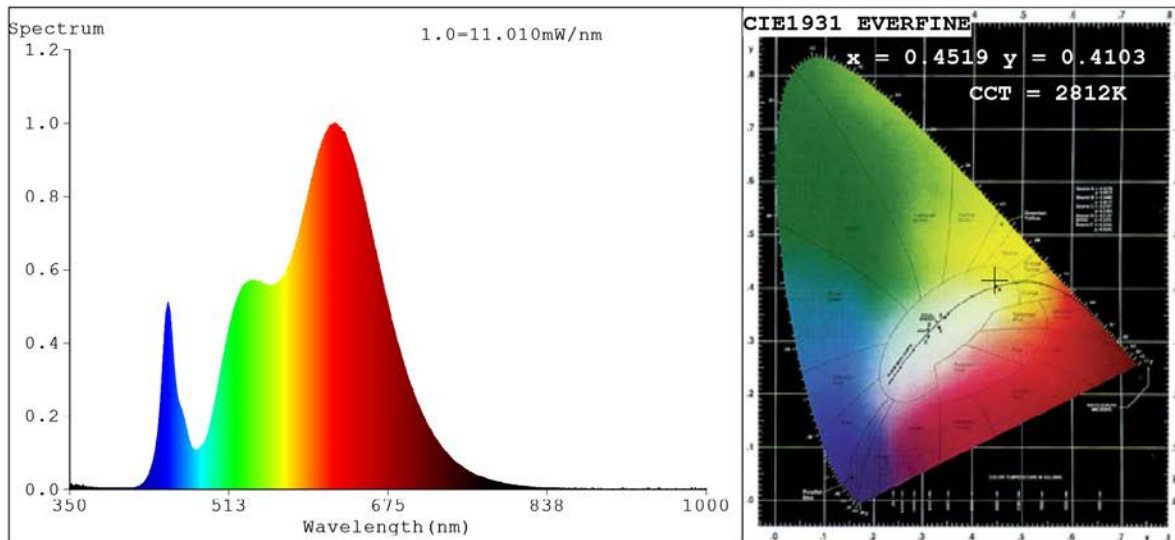


Spectrum Test Report



Color Parameters:

Chromaticity Coordinate: $x=0.4519$ $y=0.4103$ $u'=0.2575$ $v'=0.5260$
 CCT=2812K (Duv=0.0006) Dominant WL: $\lambda_d = 583.5\text{nm}$ Purity=58.8%
 Ratio: R=26.4% G=71.7% B=1.9%; Peak WL: $\lambda_p = 620.7\text{nm}$ FWHM=156.9nm
 Render Index: Ra=94.6 CRI=91.2 TM30: Rf=91 Rg=103
 R1 =98 R2 =96 R3 =93 R4 =95 R5 =97 R6 =96 R7 =95
 R8 =87 R9 =66 R10=89 R11=92 R12=80 R13=98 R14=94 R15=92

Photo Parameters:

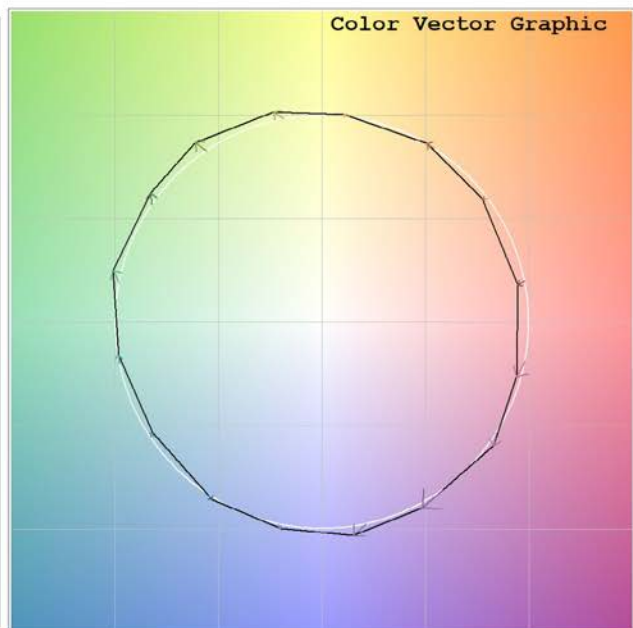
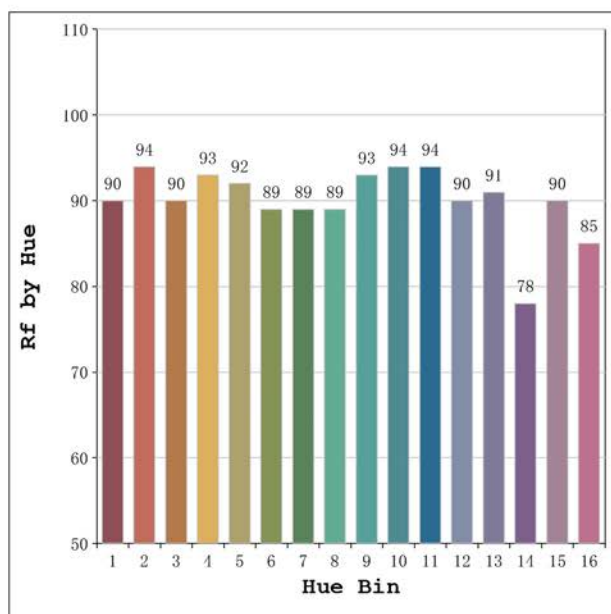
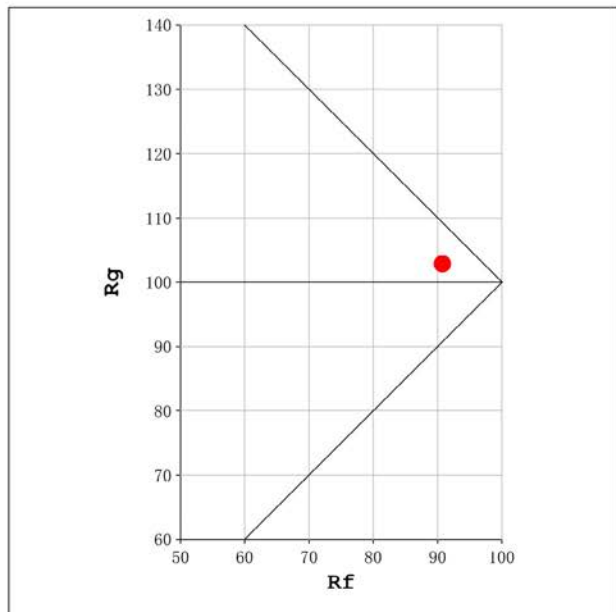
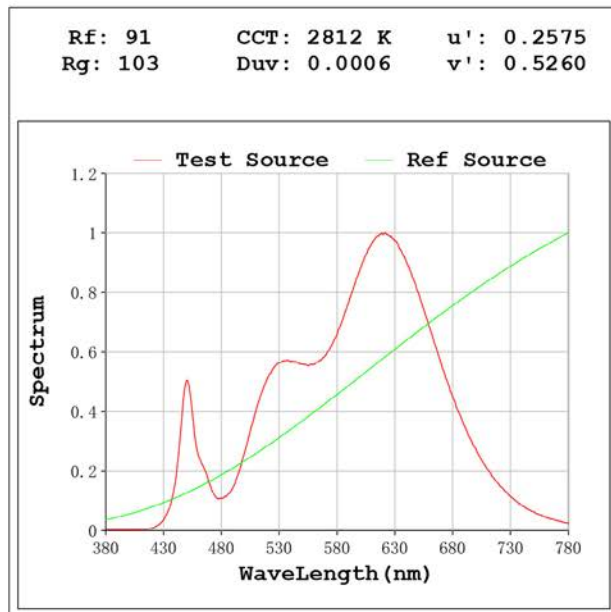
Flux = 495.7 lm Eff. : 99.55 lm/W $\Phi_e = 1.702\text{ W}$

Electrical parameters:

V = 23.998 V I = 0.2075 A P = 4.980 W PF = 1.000

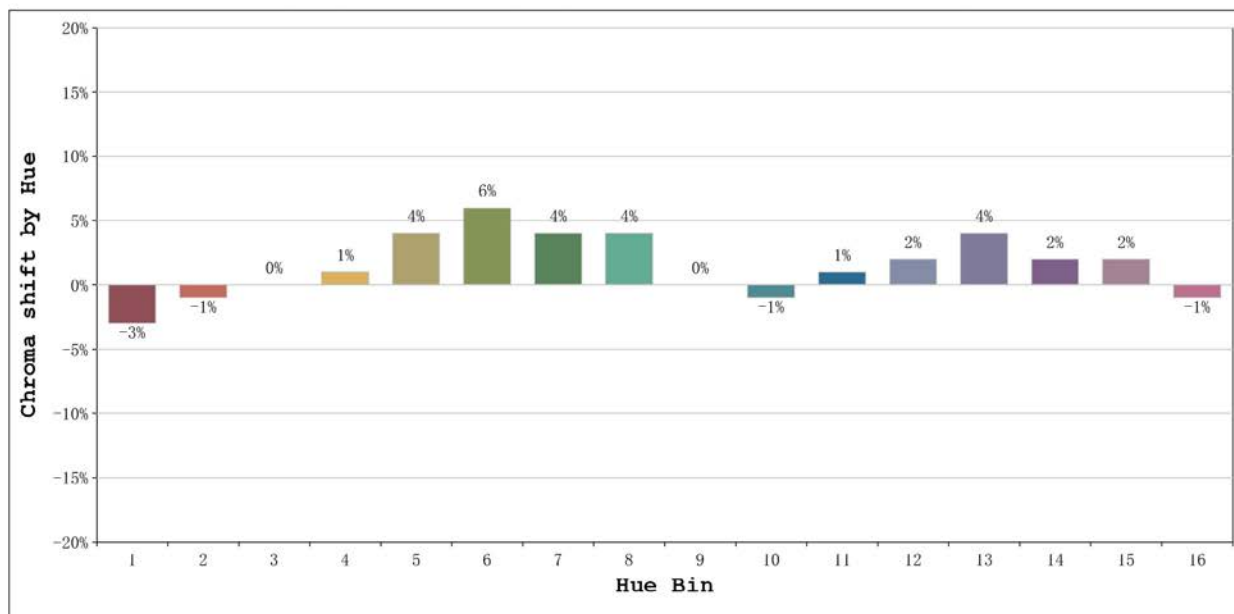
Status: Integral T = 2000 ms $I_p = 40937$ (62%)

Model: Ecoled Élite 5 Gold 2800	Number: 31.161
Tester: Sergio Carneros	Date: 2025-02-12 12:43:51
Temperature: 20Deg	Humidity: 50%
Manufacturer: Luz Negra	Remarks: 100cm de tira flexible



Model:Ecoled Élite 5 Gold 2800
 Tester:Sergio Carneros
 Temperature:20Deg
 Manufacturer:Luz Negra

Number: 31.161
 Date:2025-02-12 12:43:51
 Humidity:50%
 Remarks:100cm de tira flexible



			Graphic shift(%)	
Hue Bin	Hue Angle	Rf	Chroma	Hue
1	0.0° - 22.5°	90	-3	-1
2	22.5° - 45.0°	94	-1	2
3	45.0° - 67.5°	90	0	4
4	67.5° - 90.0°	93	1	2
5	90.0° - 112.5°	92	4	4
6	112.5° - 135.0°	89	6	2
7	135.0° - 157.5°	89	4	-3
8	157.5° - 180.0°	89	4	-4
9	180.0° - 202.5°	93	0	-3
10	202.5° - 225.0°	94	-1	0
11	225.0° - 247.5°	94	1	3
12	247.5° - 270.0°	90	2	2
13	270.0° - 292.5°	91	4	-6
14	292.5° - 315.0°	78	2	-12
15	315.0° - 337.5°	90	2	-5
16	337.5° - 360.0°	85	-1	-7

Model:Ecoled Élite 5 Gold 2800
Tester:Sergio Carneros
Temperature:20Deg
Manufacturer:Luz Negra

Number: 31.161
Date:2025-02-12 12:43:51
Humidity:50%
Remarks:100cm de tira flexible